

Table of Contents

Chapter 1.	Coastie Director at Public Affairs Events	1
Chapter 2.	Coastie Event & Boat Show Interactions	4
Chapter 3.	General Operations and Improved Maintenance Tips	8
	<i>Turning Coastie On</i>	<i>8</i>
	<i>Main Battery Power Level</i>	<i>8</i>
	<i>Cold Weather Operation</i>	<i>8</i>
	<i>Remote Control Batteries</i>	<i>9</i>
	<i>Remote Neck Safety Strap</i>	<i>9</i>
	<i>Receiver Headset Phono Jack</i>	<i>9</i>
	<i>Receiver Headset and Voice Transmitter Cases</i>	<i>10</i>
	<i>Batteries for Receiver and Voice Transmitter Cases</i>	<i>10</i>
	<i>Robot Top Cabin Section Retaining Pins</i>	<i>10</i>
	<i>Remote Antenna Extension</i>	<i>10</i>
	<i>Internal Antenna Receiver</i>	<i>11</i>
	<i>Fire Extinguisher</i>	<i>11</i>
Chapter 4.	Coastie Operator's Guide	13
	<i>Bow Microphone for Hearing the Children</i>	<i>13</i>
	<i>Headset Microphone Voice Transmitter</i>	<i>13</i>
	<i>Coastie's Eyelids Move Up and Down</i>	<i>13</i>
	<i>Coastie's Eyes Move Left and Right</i>	<i>13</i>
	<i>Coastie's Eyes Light Up and Blink</i>	<i>14</i>
	<i>Running Lights Operate by Remote Control</i>	<i>14</i>
	<i>Coastie has an Operational Horn</i>	<i>14</i>
	<i>Coastie has a Siren</i>	<i>14</i>
	<i>Coastie can Play Music Through His Remote Cassette Player</i>	<i>14</i>
	<i>Coastie can also be Equipped with a Remote CD Player</i>	<i>14</i>
	<i>Coastie can also Pump His Bilge</i>	<i>14</i>
	<i>Coastie's Mobility Allows Diversified Movement</i>	<i>14</i>
	<i>Coastie can Squirt Water 25 Feet</i>	<i>15</i>
	<i>Coastie's Rotating Beacon Controls the Class</i>	<i>15</i>
	<i>Coastie's Search Light can Make You a Star</i>	<i>15</i>
	<i>Safety Precautions</i>	<i>15</i>
	<i>Proficiency of Operation Comes with Practice</i>	<i>15</i>
Chapter 5.	Public Relations Events	17
	<i>Parades</i>	<i>17</i>
	<i>Pen Enclosures</i>	<i>18</i>
	<i>Sound Amplification</i>	<i>18</i>
	<i>Handouts</i>	<i>18</i>
	<i>Coloring Books</i>	<i>18</i>
	<i>Boat Shows</i>	<i>19</i>
	<i>Hospital Visits</i>	<i>19</i>
	<i>Concerts (Outside)</i>	<i>20</i>

Table of Contents *(Continued)*

Chapter 6.	Coastie Safety Information	22
	<i>Untrained Operators</i>	22
	<i>Operation Around Small Children</i>	22
	<i>Remote Control Loss During Operation</i>	22
	<i>Robot Operation with Two People</i>	22
	<i>Operational Surfaces</i>	22
	<i>Robot Operation During Rain</i>	22
	<i>Robot Receiver Antenna</i>	23
	<i>Operating Around the Waterfront</i>	23
Chapter 7.	Special Concerns for Directors & Operators	25
	<i>Shy Children</i>	25
	<i>Overbearing Children</i>	25
	<i>Special Need Children</i>	25
Chapter 8.	Coastie's Specifications	27
	<i>Versatile</i>	27
	<i>Effective</i>	27
	<i>Features</i>	27
	<i>Fully Mobile</i>	27
	<i>Voice System</i>	27
	<i>Audio Cassette Player</i>	27
	<i>CD Player</i>	27
	<i>Siren</i>	27
	<i>Water Squirter</i>	27
	<i>Bilge Pump</i>	28
	<i>Lights</i>	28
	<i>Horns</i>	28
	<i>Rechargeable Battery</i>	28
	<i>Moving Eyes</i>	28
	<i>Moving Eyelids</i>	28
	<i>Rear Access Hatch</i>	28
	<i>Removable Top</i>	28
	<i>Controls Carrying Case</i>	28
	<i>Well Built</i>	28
	<i>Customer Support</i>	28
	<i>Pricing</i>	28
Appendix A.	Coastie Setup Page	A-1
	<i>Coastie's Jingle</i>	A-2
	<i>Coastie's Signs</i>	A-3
	<i>Attaching Signs</i>	A-3
	<i>Cleaning Signs</i>	A-3
	<i>Making Signs</i>	A-3
	<i>Coastie Name Sign</i>	A-4
	<i>Auxiliary Logo</i>	A-4
	<i>Bow Signs</i>	A-4
	<i>Stern Signs</i>	A-4

Table of Contents *(Continued)*

Appendix A.	Flags	A-5
<i>(Continued)</i>	Public Address System	A-6
	Coastie Trading Cards	A-7
	Transportation	A-8
	Miscellaneous Coastie Graphics	A-10
Appendix B.	Coastie's Modification Page	B-1
	<i>Bow tie-down</i>	B-1
	<i>Hour Meter Installation</i>	B-1
	<i>Gunnel rub rail</i>	B-2
	<i>Emergency "Kill" Switch</i>	B-2
	<i>CD Player Bracket</i>	B-3
	<i>Trailer Information</i>	B-3
Appendix C.	Boating and Water Safety Lesson Plan	C-1
	<i>Introduction</i>	C-1
	<i>Coastie's First Rule</i>	C-2
	<i>Coastie's Second Rule</i>	C-3
	<i>Coastie's Third Rule</i>	C-4
	<i>Coastie's Fourth Rule</i>	C-5
	<i>Coastie's Fifth Rule</i>	C-6
	<i>Coastie's Sixth Rule</i>	C-6
	<i>Coastie on Pollution</i>	C-7
	<i>Ice Safety</i>	C-9
	<i>Coastie Trading Card</i>	C-10
	<i>Review Rules 1,2,3,</i>	C-11
	<i>Closing</i>	C-12

FRONT COVER

OUTLINE FOR WRITING A GRANT

Coastie Director at Public Affairs Events

The Director plays a very important roll during all Coastie presentations. The person who fills this position should have a warm, friendly personality and be able to interact positively with children and adults. This person should also have a great deal of patience and be able to keep track of everything that is going on around Coastie. He/she must be in a proper, clean uniform and be neatly groomed at all times since he/she is representing the Coast Guard and Coast Guard Auxiliary when performing with Coastie.

The Director is the communications link between Coastie and the children since many talk very softly and cannot be heard by the Operator over Coastie's built in microphone. The Director may have to repeat what the children have said or simply make sure that the children are the proper distance from Coastie's microphone.

The Director is also responsible for Coastie's safety. Small children are inquisitive and like to touch things. The Director must make sure that children do not touch Coastie's eyes or eyelids, lean on the microphone, or be in a position where they may damage Coastie. Additionally, the Director must make sure that the children are not in a position where they may get hurt by Coastie if he moves suddenly.

The Director should remain close to Coastie's bow at all times. In this position he/she is ready to maintain control if the remote control system is overridden by stray radio frequencies. This is the easiest position to be in to protect Coastie and the children. The Director must know where the main power switch is if it becomes necessary to shut Coastie down quickly.

The Director is also Coastie's guide in congested areas like boat shows or any event where the Operator has difficulty-seeing Coastie because of large crowds. He/she may need to operate the CD remote and select appropriate music for Coastie to play and dance to and must insure that Coastie has room to turn in and move back and forth safely. Additionally, the Director must check the main battery power during long periods of use and return Coastie to his maintenance area for battery changes before all power is depleted.

The Director must interact with Coastie and his audience to maintain interest and communications by prompting questions like, "What do you wear when you go boating?", sharing names with Coastie, and talking to Coastie as if he were real and alive. He/she may be required to help smaller children retrieve trading cards from Coastie's smoke stack.

The Director should not be "on duty" (performing out in front with Coastie) for more than 90 minutes at a time. After that period he/she should take a 45-60 minute break before resuming the Director duties. This schedule may require that two or more Directors be available at public appearances. Remember, both the Director and Coastie are in the public spotlight when performing. Positive representation is very important to the Coastie program image, the Auxiliary, and the Coast Guard.

(This page intentionally left blank)

Coastie Event & Boat Show Interactions

Coastie's Operator has a two-part mission. First, they are the voice of Coastie. Second, they control Coastie's animated features, that is, they keep Coastie ALIVE! The Operator can be an adult male or female. This person should stay "out of sight" as much as possible. They should speak in a clear and slow natural voice. Coastie will work the magic on your voice so you sound like a cartoon character or, in this case, Coastie. This is accomplished through a voice synthesizer. The operator will be wearing two control boxes and a combination microphone and headset earpiece. One box is a transmitter for Coastie's voice and the other is a receiver so you can hear when the children are talking to Coastie. It is very important that Coastie interacts and maintains conversation with the children and audience. He must move his eyes and eyelids and turn from side to side. If this animated action fails to occur, the magic of Coastie is lost!

Below is a list of approved comments by Coastie:

1. "Hi! What is your name? My name is Coastie."
2. "How old are you? I'm five years old."
3. "Today is my birthday. Would you sing Happy Birthday to me?" (Everyday is Coastie's birthday as he is always 5 years old.)
4. "Are you enjoying the _____?" (put in boat show or event name)
5. "Do you enjoy riding on a boat?"
6. "Let me ask you a very important question. 'What is the most important thing to wear when you go boating?'"

When they answer correctly have Coastie sound his siren and jump up and down and say, "That's right, that's right. Great job!"

As a reward, Coastie say's, "You're right. Reach in my smoke stack and get one of my (trading cards, buttons, a piece of candy, etc.)" As the child reaches in, Coastie giggles and says, "That tickles!" He then settles down so they can get a card.

If they don't answer correctly, Coastie helps them out by calling attention to the little toy bears and Snoopy riding on his deck who are all wearing life jackets. Each child always receives a trading card.

7. "Do you want to hear my siren?"

8. "Cover your ears and I will sound my foghorn. It is very loud. Are you ready?"

The Operator and Director need to make sure everyone is aware that Coastie is going to sound his foghorn as some children are very frightened when this occurs. Make sure they cover their ears!

9. Coastie can share that his dad is a Coast Guard cutter and they go on patrols together. Coastie's dad is teaching him how to be a big Coast Guard cutter when he grows up.

10. "Do you know what I'm going to be when I grow up? A cutter like my Dad! What are you going to be?"

11. "I like to eat pizza, McDonalds, and peanut butter. What do you like to eat?"

12. "I sleep in the bathtub --- that's where all toy boats sleep. Where do you sleep?" (See no. 18)

13. "My dad is a Coast Guard cutter on Lake _____."

14. "My mom is a buoy tender on Lake _____."

15. When talking to adults specifically ask them, "Have you taken a safe boating class? Please call the phone number on my trading card to sign up for a class so our waterways will be fun and safe for all."

16. "Do you want to hear my Coastie Jingle?" Have Coastie move fore and aft dancing to the jingle.

17. "Would you give me a big hug? I love hugs!"

18. During the summer and when outside, Coastie can squirt the kids with his squirter. This is something all kids love. Be very careful that they are not too close as the squirter can hit them directly in the eye. The floor can also become slippery and someone may fall. Use good common sense when using this accessory.

19. Tell kids jokes. "Why did the hippopotamus cross the road? -- Because it was the chickens day off!" Coastie giggles.

"Why do cows wear bells? -- Because their horns don't work!"

"Which house weighs the least? -- A lighthouse!"

20. You can always play one of the many children's songs available on CD or cassette tape. Children love to dance, march, and sing along with Coastie.

Most of all, Coastie must have a bubbly, outgoing, creative personality. But most of all, he needs to be 5 years old! He must always be animated and appear alive!!!

Chapter 2. Coastie Event & Boat Show Interactions

(This page intentionally left blank)

General Operations and Improved Maintenance Tips

The following Operational and Maintenance tips have been compiled from experience. Some are not covered in the Robot Operating Manual. It is advised that the Operations Manual and these additional tips be shared with all Operators and maintained by the individual on the Team who has agreed to take care of maintenance.

TURNING COASTIE ON:

To turn Coastie "on" always turn the remote on first then the main power switch inside the rear hatch.

Reverse the procedure for turning him "off", turn the boat off first and then the remote.

MAIN BATTERY POWER LEVEL:

You may check the battery power level by turning on the battery voltmeter indicator switch. On some boats the voltmeter is on all the time during operation. Do not use Coastie if the battery level indicator needle is not in the green or falls to 12 volts or below. The boat will start to operate erratically and many features will not function correctly.

Coastie can be operated while he is plugged into a 12 volt 10 amp battery charger using his shore power recharging connection.

Coastie can operate for 2-3 hours on a single charge and sometimes as long as 4 hours. Always have your back-up batteries charged for quick replacement.

COLD WEATHER OPERATION:

If your Coastie is equipped with a bilge pump please use the special measuring device when filling Coastie's bilge water reservoir. Do not overfill! Always turn off the water valve after each operation. In cold climates the water will freeze, remember to remove all water before cold weather if your Coastie is stored in a trailer or garage.

This also applies to the water squirter system. You may use antifreeze to protect the system. Use only RV antifreeze, which is safer if you happen to come in contact with it. Do not use the system during an event or classroom presentation if it is winterized! Disable the system by disconnecting the power source or turning the pump switch to center off position. When placing the unit back in

service for warmer weather make sure you flush the system well to remove all traces of RV potable anti freeze.

REMOTE CONTROL BATTERIES:

Batteries should always be recharged after each use. Be very careful when disconnecting batteries from the remote, as wires are fragile and can easily break the lead contact at the battery solder point. These breaks can be re-soldered if required. It is better to use the charging unit that plugs into the rear of the remote unless rotating batteries and charging two at one time.

The super battery is perfect for long periods of operational time although it is much heavier and adds significant weight to the remote. It can be attached with Velcro to the "bottom" of the remote and lasts up to seven hours. If you install it on the back door of the remote the weight of the battery will pull the door off, therefore use the bottom of the remote.

If you have more than one standard battery (yellow) it is advisable to number them 001, 002, for better rotation during charging. These batteries are good for 2-3 hours of operation on a full charge. Charging can take 14-16 hours.

Low batteries cause erratic movement and response in the robot. Always start with fully charged batteries.

REMOTE NECK SAFETY STRAP:

The neck strap metal retaining clip has come unsnapped on many occasions. It is advisable that this clip be changed to a type that is more secure. The remote can be severely damaged as the case is plastic and the internal electronics are very fragile if dropped on the floor.

The strap connection hardware point on the remote is plastic and has broken on two occasions. It is advisable to be prepared for such an event and keep both hands on the remote. Have at least two replacements in stock. They can be purchased through the local hobby shop or Robotronics.

The strap should always be used as it allows for free movement, control and comfort for the operator. It certainly will protect the remote from being damaged when properly upgraded.

RECEIVER HEADSET PHONO JACK:

The headset phono jacks internal connectors have broken on numerous occasions. This is noted by not hearing any voice transmission from the microphone on the bow or intermittent voice when the wires are moved. The wires take a great deal of abuse through movement during normal operation.

They are very fragile and can be easily broken although they are easily repaired. This connection should be inspected before each use so the loss of hearing won't occur during a presentation. Simply unscrew the Jack cover and check the wires for secure attachment at the solder points.

RECEIVER HEADSET AND VOICE TRANSMITTER CASES:

Both these units have weak tabs at the battery connector points and sometimes lose contact. This problem occurs when the batteries are installed and the metal tabs bend inwards creating bad contact with the battery positive and negative terminal points. To eliminate this problem take a small screwdriver and carefully bend the tab out to regain solid contact with the tab and battery.

If you have electronic talent you can replace the metal tabs with the 9-volt snap on connectors and never experience this problem again.

BATTERIES FOR RECEIVER AND VOICE TRANSMITTER CASES:

These 9 volt batteries become very expensive if you purchase retail as their life span is short and it is not advisable to use for too long a period of time. You should locate a wholesale source and purchase these batteries in bulk. We purchase from a company called Batteries Plus, a wholesale retail battery chain that has very reasonable prices. The batteries are Duracell Procell, Professional Alkaline Batteries, 72 per case, P.N. PC1604. Their life span is hard to calculate and it is advisable that at any formal event or presentation you start with new batteries. You may want to purchase a Radio Shack Multimeter, Model 22-802 for checking battery power levels when required. This unit is good for all batteries that are used in support of Coastie operations.

ROBOT TOP CABIN SECTION RETAINING PINS:

The top section of the boat is retained by port and starboard, fore and aft retaining pins. These pins, especially in the front, are very difficult to remove and sometimes reinstall. This problem can be eliminated by drilling a small hole in the end of the pull pin and attaching a small nylon lanyard to assist with pulling the pins open, to release the top. When removing the starboard forward pin be very careful not to touch the voice modulator control knobs, as this will change Coastie's voice.

REMOTE ANTENNA EXTENSION:

The remote antenna does not need to be fully extended and will operate the boat almost fully retracted in close proximity. Remember that the antenna can easily injure someone's eye and therefore it is much safer to leave retracted unless there is distance between the operator and the boat. It is suggested that you do not exceed 100 feet from the boat for safe operation.

INTERNAL ANTENNA RECEIVER:

The internal antenna "does" need to be fully extended and will cause voice loss and marginal operation. The antenna should be fully extended up between the eyes for better receiving. Take some plastic tubing split it down the length and place it around the metal rod supporting the eyes to eliminate interference. When removing the top always retract the antenna so it does not get damaged. It is suggested that you do not exceed 100 feet from the boat for safe operation.

FIRE EXTINGUISHER:

The Fire extinguisher serves two purposes. One it adds to Coastie's on board boating safety equipment and it can also serve as a functional Fire Extinguisher if there is an on board electrical fire. The safety seal to denote that the extinguisher has been used should be changed from tape to a plastic type that is more difficult for a child to release, although not a problem for an adult. We have experienced dry chemical powder discharge loss do to child activation.

The extinguisher we advise is the KIDDE, Model PKG 200, Dry Chemical Fire Extinguisher, Classification 2-BC, Weight 1lb, 1 oz. These are not available any more although they can be found in some Home Depots and Lowes stores. If you can't locate one you can contact the following company they may have some in stock. This unit is the perfect size for Coastie.

KIDDE Fire Extinguisher Co., 1394 South Third Street, MEBANE, NC 27302-9199

919 563-5911

READ THE OPERATIONS AND MAINTENANCE MANUAL SUPPLIED BY ROBOTRONICS, AS THERE IS A WEALTH OF INFORMATION ABOUT OPERATION AND CARE.

(This page intentionally left blank)

Coastie Operator's Guide

REMOTE CONTROL OPERATOR INFORMATION

Operators use the remote control console and have full operational control of Coastie. It is important to remember that you will always need to be able to see Coastie for safe operation. Sometimes you will need to steer Coastie by looking at his two flagpoles in a large crowd. When moving Coastie, always make sure the path is clear of children and any obstacles before you move ahead. Always maintain eye contact with the Director, as he is your safety observer while in a large crowd at a Boat Show. Coastie has many features that you will control that will maintain the children's attention. Operating Coastie in a safe manner is very important as injuries could occur during interaction and animation in close quarters. Coastie should always have some movement and be doing something active every 5 seconds so he will appear to be alive. This is where the magic of Coastie makes him so effective as the children experience a great deal of fun and gain educational value from their new friend.

COASTIE'S OPERATIONAL FEATURES

BOW MICROPHONE FOR HEARING THE CHILDREN: There is a microphone in the bow so the Operator can hear what the children are saying. Coastie will need to be fairly close to the children so the operator can hear and reply. Children talk very softly and the Director may need to assist with their names and responses. Do not place anything over the microphone or let it become obstructed in any way. If children lean against the microphone the operator will not hear. Be careful to keep children from putting their fingers on the microphone since this will also reduce hearing and may actually damage it or push it through the hull.

HEADSET MICROPHONE VOICE TRANSMITTER: Coastie's Operator has a microphone on the headset to transmit his voice to Coastie and then through a Voice Modifier. The Voice Modifier makes the Operator's voice sound like a cartoon character voice by shifting the voice frequency up one octave. The Voice Modifier must be adjusted when a female operator takes the controls. If not, the voice will be too high. It is important to talk slow and articulate your words. If you talk too fast the children will not be able to understand Coastie.

COASTIE'S EYELIDS MOVE UP AND DOWN : The eyelids move up and down, independently, or together. Children always want to touch the eyelids so it is imperative that the Director protects Coastie's eyelids and, at the same time, tactfully tell the children, "Please don't touch Coastie's eyes because it might hurt him".

COASTIE'S EYES MOVE LEFT AND RIGHT: The eyes move left and right. For Coastie to be alive his eyes must maintain consistent movement. Coastie should

look towards the person he is talking with. The eyes are another area of concern as they are fragile and could be easily damaged. The Director must maintain control of the situation by asking the children not to touch Coastie's eyes.

COASTIE'S EYES LIGHT UP AND BLINK: The lights behind the eyes automatically blink to the sounds of music or voice.

RUNNING LIGHTS OPERATE BY REMOTE CONTROL: You can turn the running lights on or off. There is a port, starboard, center cabin and stern light. The lights are not regulation although in this application it isn't important.

COASTIE HAS AN OPERATIONAL HORN: Coastie's horn is very loud. Before sounding the horn the Director should tell the children to cover their ears. Younger children can be very frightened so you must be aware of the age group of your audience.

COASTIE HAS A SIREN: You can sound Coastie's siren. Again, the Director should warn the children, especially younger ones, in advance so that they are not frightened by the sudden noise.

COASTIE CAN PLAY MUSIC THROUGH HIS REMOTE CASSETTE PLAYER: You can play cassette tapes through Coastie using the remote control. Remember, however, that you can only play the song that is next on the tape. One advantage of the cassette player is that you can record your own tapes and establish a song list for events and parades.

COASTIE CAN ALSO BE EQUIPED WITH A REMOTE CD PLAYER: With the remote control CD player you can play prerecorded CDs and, using the CD remote, you can select any song you wish to play. The Director must control this operation of the CD since he is with Coastie. (This is an optional accessory although it is now part of the Coastie package)

COASTIE CAN ALSO PUMP HIS BILGE: Coastie can pump his bilge but you will have to open the valve inside his hull and possibly change the horn switch position. Installation varies with each boat so read the special instructions in the operations manual. The Director should have one of the children hold the bilge bucket at the through hull fitting so water doesn't get on the floor. (This is an optional accessory)

COASTIE'S MOBILITY ALLOWS DIVERSIFIED MOVEMENT: Coastie is very mobile and can turn left, right, go forward or backwards, spin around and dance. The dancing is initiated by rocking him fore and aft. His flags will move back and forth during his dance routine. This takes some practice on the part of the Operator.

COASTIE CAN SQUIRT WATER 25 FEET: If Coastie is equipped with a water squirter system you can squirt water at least 25 feet, which the children just love in warm weather. If the children are too close they can easily be squirted in face and eyes so caution is very important. The floor can also become very slippery and someone could get hurt, so consider the surface before using the Squirter.

COASTIE'S ROTATING BEACON CONTROLS THE CLASS: Coastie's rotating amber beacon is remote controlled. The beacon is used to calm the children down when they get too noisy and are not paying attention to the Instructor and Coastie. They should be told that they must be very quiet when the light comes on or Coastie will become very quiet and take a nap. This works very well during the classroom sessions.

COASTIE'S SEARCH LIGHT CAN MAKE YOU A STAR: Coastie's searchlight draws a large amount of voltage from the battery. It is advisable not to use it too often. One cute little routine that can be done with the parents or children and that always brings a smile follows: Coastie says, "I can make you a Star!" (Mom Dad or Child) Then he points the searchlight at the individual's chest (not eyes) and says, "You're a star!" The newer Coasties have a very high candlepower search light. Extreme caution should be taken not to shine the beam directly in anyone's eyes.

SAFETY PRECAUTIONS: Remember that Coastie has the power to easily knock down a small 2- 4-year-old child. As the Operator you must always be focused on the interaction-taking place and not be distracted by other events going on around you.

PROFICIENCY OF OPERATION COMES WITH PRACTICE: Once you have mastered the operational aspects of Coastie it will be just like driving a car or riding a bike. Your control will be a natural reaction with smooth and precise results. This will come with time and experience. So, practice, practice, practice!

(This page intentionally left blank)

Public Relations Events

Coastie Public Relations events are a substantial part of the overall program. The events range from Safe Boating Week to Concerts, and also Parades. Special Children's events, such as visits to Children's Hospitals, and Kids Expositions are great fun with Coastie. Coastie requests include Grand Openings, and Boat Shows. The United States Coast Guard and the USCG Auxiliary request many events for which Coastie is the star attraction. Cities, School Districts, and Commercial organizations request Coastie for many of their local events. As your Coastie gains local and State notoriety the demands for Public Appearance will continue to grow.

It is extremely important to remember that whatever the Public Relations event may be, the Boating and Water Safety message must be shared with all who come in contact with Coastie. The USCGA is in the spotlight at these events and professionalism is of the utmost importance. There are so many variations with these types of events that it would be impossible to share all the particulars for each one. Communications with the event promoter is the key to knowing what is expected from the Coastie Operations Team.

PARADES:

Parades can be handled in two ways. Coastie can be operated on the street, if the street is dry and smooth. Distance is a factor as the battery life is only good for about 1 to 2 1/2 hours under continuous use. Accessories should be operated randomly as using all these power-drawing features will use battery life quickly. It will be important to have one or possibly two back up 12 volt, primary batteries ready to be changed when Coastie's functions start to noticeably decrease. Coastie is placed out in front of the Operator who follows Coastie in a vehicle from behind that either can transport him internally or preferably tows a flat bed trailer to place him on, in the event of technical difficulties. The vehicle and trailer should be decorated or carry signs specifying the USCG Auxiliary or Team Organization such as the Division of Watercraft. The primary parades are July 4th and Christmas Parades which are the most popular with the Children. Every District will be different and there may be multiple parades to support.

The flat bed trailer is the second best way to present Coastie in a Parade as it allows for very little use of the primary battery. Coastie can be tethered to the trailer, which allows for movement but does not allow him to roll off the trailer. We have included some photos of Parades Coastie has attended and the use of the flat bed trailer concept. Coastie also has his own miniature boat bunk trailer that can be towed behind a yard tractor, golf cart, or vehicle. The only drawback is once secured to the boat trailer he loses the freedom of movement that is important as he interacts with the children and adults along the Parade route.

PEN ENCLOSURES:

Once you experience the incredible popularity of Coastie you will experience the need for crowd/children control. At large events that are geared primarily for children Coastie is often overwhelmed by the children. They often feel the need to touch and hug Coastie and this can be overwhelming for the operator and the Director up front with Coastie. The easiest way to control this situation is to establish a pen area using four "heavy-duty" posts made of chrome steel or wooden posts with a smooth Finish. These posts are interconnected by rope with chrome clips, which create a barrier to maintain the distance required to keep the children from overpowering Coastie.

SOUND AMPLIFICATION:

When attending outside functions that have interfering sound activity it is important to consider that in order for Coastie to be heard a secondary portable Public Address System may be required to offset his own sound system.

HANDOUTS:

Our best give away for the Public Relations events are the Coastie Trading Cards. These cards are a favorite for all the kids as it is one of today's growing fads. The card is a colorful and certainly eye catching and has multiple purposes. First of all, it gives the children a way to remember Coastie. Second it helps to send Coastie's special message to the children to "Always Wear Your Life Jacket When You Go Boating". The primary purpose is the card tells the parents whom to contact to take a safe boating course while it signifies our mission to educate the public in regard to boating safety. This will be one of your most expensive giveaways in support of Public relations events. The Cards are \$30.00 per thousand and are best purchased in lots of 3000.

COLORING BOOKS:

Coloring books are another item for giveaways, although they are only used in public education presentations at schools or public relations events where only small quantities are required. The U.S. Army Corps of Engineers has a "Water Fun Book" which are easily acquired in large numbers on request from the Corp. The new coloring book "Boating Fun – Adventure on the Water" is available from the Auxiliary Supply Center and Coastie is featured on the front and numerous places inside. This book is also for educational presentations only.

BOAT SHOWS:

As for mission related events, Boat Shows are very beneficial for the USCG Auxiliaries contact with the boating public. Boat shows can have a positive impact on our mission by having Coastie as an attraction at the Auxiliary booth, which draws the children, and intern also captures the adult's attention. While the children are captivated with Coastie, Auxiliariist can take the opportunity to approach the adults and inquirer as to whether they have taken a safe boating course. Remember even adults fall in Love with Coastie. Coastie also can travel around the show interacting with children, adults, and Marine Dealerships. Coastie passes out the trading cards and tells the kids where he will be. This brings the adults to the Auxiliary booth and allows for interaction between the adults and the Auxiliariist.

Another plus at Boat Shows is the effectiveness of PFD Panda and Coastie working together to draw attention to the Auxiliary. Coastie and PFD who give out Trading Cards easily captivate the children and PFD Panda certificates. The adults see the fun the kids are having with Coastie and PFD and this places the Auxiliary is in the spotlight. The opportunity for interaction speaks for itself.

HOSPITAL VISITS:

Our most rewarding Public Relations effort is our monthly visits to Children's Hospital. We spend about four hours going to each floor and to as many rooms as possible in an attempt to bring a smile to the children and parents who are staying at the hospital. Coastie travels along with his Director who talks with the children and try's to get them to open up and smile. Coastie will sing Happy Birthday and tell jokes and riddles. He will give out coloring books and Coastie Trading cards. He also plays various songs from his CD player and if able the children dance and sing along with him.

This effort does not come with out some heartbreak, as many of these Children are critically ill or injured. The parents, Doctors, and Nurses just love Coastie and see the tremendous value of his visits. The event is coordinated through the Volunteer Services Office and they normally supply 2 volunteer staff members to escort Coastie through the Hospital.

The patient rooms are very difficult to maneuver in and through as they are cluttered with medical equipment and parent lounges. It is important that the Coastie Operator be experienced in controlling Coastie so as not to damage or interrupt any medical support that the patient is receiving. The escorts will verify with the parents or Nurse as to whether or not Coastie may enter the room.

Oxygen is another issue to be aware of, as the Boat is not electrically designed for Hospital use. Sound volume can be a concern, as some patients cannot deal with the noise level from Coasties voice or music especially in a confined area.

Overall everyone loves Coastie and can't wait for him to visit. Remember Coastie must be upbeat and spontaneous and promote a whole lot of fun!

CONCERTS (Outside):

Concerts can be a lot of fun with Coastie prior to the curtain rising. The most important thing to remember is not to compete with other presentations as Coastie can easily interfere, and this sometimes upsets the other presenters. As always crowd control is a must, as many children are not managed by their parents and if you don't have enough Directors up front with Coastie he can be damaged very quickly. The best device for large crowds is the pen enclosure as you remain in control of how close the children can get to Coastie and interact with him under the watchful eyes of the Directors. Try to find out the theme of the concert as you can customize the tape or even the CD for these events and be a more in tune with the program.

The best rule of thumb is to scope out any event in advance and know what you're dealing with so you will be prepared to handle any issue that might arise.

Have Fun!

(This page intentionally left blank)

Coastie Safety Information

UNTRAINED OPERATORS: Never let an untrained person operate Coastie unless supervised by an experienced operator. Liability could be an issue if an accident occurs.

OPERATION AROUND SMALL CHILDREN: Be careful when operating Coastie around small children. Young children, especially ages 2-4, can change directions very quickly or lose their balance and fall. This is why there must always be a director to protect the children from the boat and the boat from the children.

REMOTE CONTROL LOSS DURING OPERATION: Operators have experienced loss of remote control because of stray radio frequencies. These frequencies can come from a mobile unit, hand held radio's, and transmitter towers. When these incidents occur, you have only a few seconds to shut the main power switch off in the boat before the boat's entire system will start functioning independent of the remote. This requires immediate action on the part of the Director or other team members in close proximity of Coastie.

To protect spectators and children, the Director has to remain between the boat and the audience at all times. It is possible for Coastie to "run over" people either because the Operator can't see the individuals or because Coastie does not respond to remote control signals.

ROBOT OPERATION WITH TWO PEOPLE: At no time should the voice and operation of the boat be split between two people! This destroys the continuity of Coastie's animation and voice interaction. The operator and voice cannot anticipate what the other will do and or say. Therefore, there should only be one operator/voice.

OPERATION SURFACES: Coastie cannot operate on grass or dirt or any rough surface. He should be kept on smooth, hard surfaces or rugs with a very tight, short weave. Rough surfaces and thick carpet may affect his CD, draw excessive battery power, and/or possible damage the drive motors.

ROBOT OPERATION DURING RAIN: Coastie is a very complex computerized electronic robot. He should never get wet internally which may cause circuits to short. If there is a short, the electronics box should be opened and the circuit boards carefully dried with a hair dryer. If you must operate Coastie in inclement weather you should have a clear, plastic tarp available to cover Coastie in the event of rain.

ROBOT RECEIVER ANTENNA: Coastie's voice receiver antenna should always be fully extended up between the eyes in the cabin. If this is not done, the boat will sound erratic because of a poor signal.

OPERATING AROUND THE WATERFRONT: When operating around the water, it is advisable to keep Coastie away from the edge of the dock. A safety leash made of heavy nylon would allow the operator to have a safety margin when operating near the water. If operation near the water will be frequent, it may be advisable to mount eyebolts on Coastie's stern to serve as an attachment point for the safety leash.

(This page intentionally left blank)

Special Concerns for Directors & Operators

SHY CHILDREN: Never focus attention on their shyness. Talk about their cute outfit. If they don't warm up tell them you will see them next year. Ask if they want a trading card. Whisper to them that you are just a little boat and you wanted to say, Hi! Say, "Bye, Bye. See you next year." if they become upset, then move on. Never force Coastie on a shy or frightened child. Many need more time to adjust. Often shy kids warm up to Coastie and become his best friend very quickly.

OVERBEARING CHILDREN: Say to them that it was nice meeting them, and now you are going to meet some other children. Ask them a question about boating to distract them from whatever they are doing. Ask them to lead the group of kids in a song. Make sure they do not touch any of Coastie's moving parts like his eyes and eyelids. If they don't settle down or the parents do not take control, say, "I will see you next year." and then move on. If they try to climb on Coastie tell them they need a life jacket to go for a boat ride. That always works.

SPECIAL NEED CHILDREN: Ask you Director to help blind children touch Coastie. Children in wheelchairs focus 100% on the child. Mentally challenged kids are very special to work with and they will generally ask Coastie very good questions. When answering their questions always call them by their name.

(This page intentionally left blank)

Coastie's Specifications

This is a lovable little robot that will help teach boating and water safety. A fully animated robot, he moves, speaks, listens, plays audiocassette tapes and activates his lights and horns all by remote control. He can wink and blink and move his eyes, and will present a friendly image to young and old alike.

VERSATILE: He can be used with great success in school classrooms, assemblies, parades, harbor tours, marinas, mall displays, local and state fairs, and any other setting where you are presenting your program.

EFFECTIVE: Shaped like a real boat, Coastie is the ideal symbol for your United States Coast Guard unit or USCG Auxiliary District, Division or Flotilla. He is just the right size for teaching children. He can communicate with children at their eye level; and when he moves he is not at all threatening. He is perfect for hugs and kisses from small friends. With his rotating beacon, spotlight, horn, and siren he is highly visible. He will make your public relations program both fun and effective, and will help teach valuable water safety concepts to children.

FEATURES: Coastie features a durable detailed boat shaped body, molded of strong impact resistant plastic. He weighs about 100 lbs., is 44" long, 30" wide, and 45" tall. His body comes pre-painted bright blue when you request the special Coastie package.

FULLY MOBILE: High quality electric drive motors and a deluxe 7-channel radio control system give Coastie complete mobility by remote control.

VOICE SYSTEM: A two-way (full-duplex) wireless voice system allows the operator to both talk and listen simultaneously. The optional voice modifier gives Coastie a cartoon character voice the children just love.

AUDIO CASSETTE PLAYER: Rugged, portable type stereo cassette player operated by remote control.

CD PLAYER: (Optional) Remote controlled player allowing you multiple song selection.

SIREN: Operator controlled warning siren.

WATER SQUIRTER: (Optional) An easily refillable water squirting system that shoots a stream of water about twenty-five feet. Great for parades and outside events as the children just love Coastie's squirter.

BILGE PUMP: (Optional) The optional bilge pump system pumps one gallon of water out the starboard side just like a real boat. The one-gallon tank also supplies the water squirter system, which can squirt about 25 feet.

LIGHTS: The spotlight on top and running lights on both sides of Coastie switch on and off by remote control. He also has a single rotating beacon, which can have a blue or amber lens.

HORNS: The single air horn is activated by remote control.

RECHARGEABLE BATTERY: The sealed maintenance-free gelled electrolyte lead acid battery (12 Volt AH) is included inside Coastie and comes complete with a 10 amp automatic charger. The radio control transmitter comes with a rechargeable NiCd battery and charger.

MOVING EYES: Eyes move left and right by remote control.

MOVING EYELIDS: Eyelids open and close separately, allowing Coastie to wink, blink, and go to sleep, all by remote control.

REAR ACCESS HATCH: Allows easy access to cassette player and doubles as a CD mounting location and access hatch to other controls. Coastie's battery is easily removed through the access hatch.

REMOVABLE TOP: Coastie's top unlatches and is easy to remove in seconds, making him easy to transport.

CONTROLS CARRYING CASE: The molded polyethylene case is 18" X 14" X 6" with locking latches. Its foam-padded interior protects the operator controls during transport and storage.

WELL BUILT: Sturdy construction, easy to operate, designed for dependable service. Easily repaired.

CUSTOMER SUPPORT: 90 day warranty on all parts and labor. A detailed owners manual, available spare parts, and continual technical support are all part of the manufacturer's commitment to your success.

PRICING: Coastie comes in a special package specifically developed for the United States Coast Guard Auxiliary with the features listed above.

If you're interested in acquiring a Coastie we must state that Coastie the Boat is a sole source purchase. The only source we know of is Robotronics Inc. 1610 West 1600 South, Springville, Utah, 84663-3057, 1-800-762-6876, POC Mr. Paul Schwen.

(This page intentionally left blank)

Coastie Setup Page

This page is intended to help new Coastie Team Members setup their Coastie according to the Auxiliary standard. Below you will find links to information on how to make the proper Coastie signs, suggestions on how to set up a trailer for transporting Coastie, and other helpful information.

If you need a copy of the Coastie music CD-ROM containing the Coastie song, Semper Paratus, and selected marches, please e-mail Coastie's Aunt June at bravohotel11s@cox.net

Coastie likes to use the Bazooka font for many of the things he writes. If you are going to print any of Coastie's information off for distribution or to use for PowerPoint or other visual aids, please make sure you have the bazooka font available. If you need a copy of the font, please download it by clicking on the icon at the right and saving the file to your disk. Thanks.



Visit Coastie's Web Site often for any updates.



Coastie Bow Signs

Bow signs can be made in two ways, the first is a decal that sticks to the bow of the Coastie boat, the second is a laminated sign that attaches with velcro.

It is up to you to decide which one you want to use.

Decals

The decals can be ordered through Fast signs at their website

www.fastsignsdirect.com

Log in using the following user name:

User@cga.com

Password “Generic”

Fill in your information and build an account for yourself.

Click on the bow signs to order, the program will then prompt you for your Coastie #.

More items will be added to this website as they are developed.

**COAST GUARD
AUXILIARY**



WAUX-40

WAUX-40

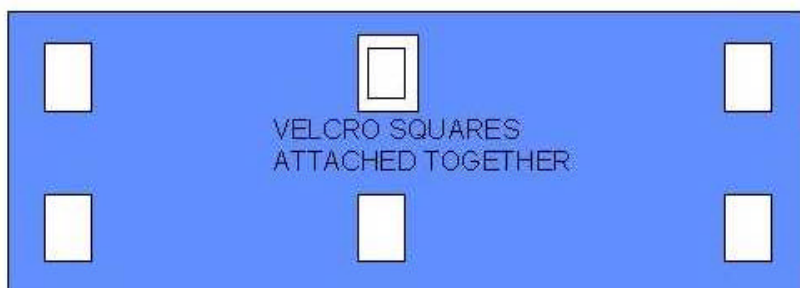


COAST GUARD
AUXILIARY

COASTIE'S SIGNS : Coastie has several signs that must be made for each new Coastie. These signs and general information applicable to all signs are discussed below.



ATTACHING SIGNS: To attach the bow, name and logo signs use precut white Velcro squares. These are available at most hardware stores. Attach the pile or soft side to the back of the sign in groups of four or six depending on the length of the sign. Click [here](#) to see a diagram of Velcro attachment. The bow and name signs take six Velcro pieces while the Auxiliary logo signs take four. Do not put the Velcro too close to the edge of the sign as the Velcro may show. Once the Velcro is attached to the sign, attach the loop side to the pile side and carefully remove the backing tape. Now you can attach the sign to the boat in the proper location. Remember; know exactly where you are going to position the signs as you only get one chance.



CLEANING SIGNS: The laminated signs can be cleaned with a soft cloth and a minimal amount of Windex cleaner.

MAKING SIGNS: You can make any of the Coastie signs using a standard computer, color printer, and laminating paper. You can see a better view of each sign by clicking on the title of the sign in the paragraphs following this section. To download a Microsoft PowerPoint file with copies of each sign that you can modify, e.g. change the hull number on the bow sign, click [here](#) and then click

["Download Presentation Source"](#). Once the file opens, choose "File, save as". Some of the signs can be printed on your color printer and then covered, both front and back, with clear laminating paper. Unless you have a large printer, some of the the signs will need to be enlarged on a high quality, color copy machine.

COASTIE NAME SIGN: This is the National uniform layout and SHOULD NOT be modified. The sign should be printed using the best quality color printer available to maintain a solid, deep, vivid color. Once printed they should be taken to a copy store and copied on a color printer to a finished size of 9 3/8 inches wide by 3 1/2 inches high so that it will fit centered just above Coastie's eyes. Once copied, the sign should be cut out and laminated 3 mil thick for protection. There should be a 1/8 inch overhang of the lamination.

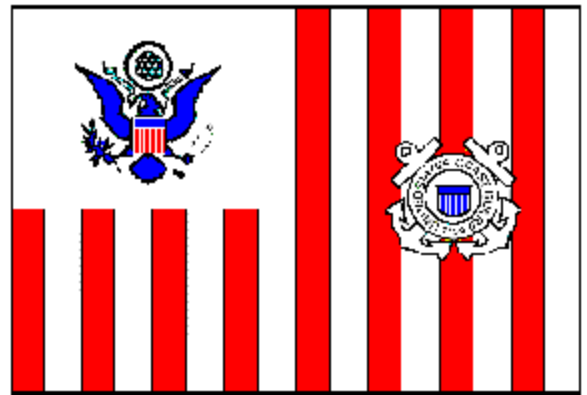
AUXILIARY LOGO: The Auxiliary Logos are placed in the windows on each side of the cabin. This logo is used specifically in support of the Coastie program. The Auxiliary logos are graphically complex and should not be modified. They should only be printed using the best quality color printer available to maintain a solid, deep, vivid color. Once printed they should be taken to a copy store and copied on a color printer to a finished size of 5 1/4 inches wide by 4 2/3 inches high. Once copied, the sign should be cut out and laminated 3 mil thick for protection. There should be a 1/8 inch overhang of the lamination.

BOW SIGNS: The bow signs should be equally spaced three (3) inches from the center of the bow and slightly down towards the stern to accommodate for the curvature of the hull. Do not go below the bottom edge of the black rub rail. Remember, there is a port and a starboard bow sign and the numbers will be towards the bow. Like all the other signs, the bow signs should only be printed using the best quality color printer available to maintain a solid, deep, vivid color. Once printed they should be taken to a copy store and copied on a color printer to a finished size of 11 1/2 inches wide by 3 1/8 inches high. Proportional copying is a must. Once copied, the sign should be cut out and laminated 3 mil thick for protection. There should be a 1/8 inch overhang of the lamination.

STERN SIGNS: A stern sign is used to give recognition to an agency or organization that has helped sponsored Coastie. These signs can easily be modified to meet your requirements. The signs are mounted below the stern light. The signs are 13 inches long and 4 1/2 inches high. Mount the sign using six Velcro squares.

FLAGS: Coastie uses several different flags depending on what he is doing. Some of these flags, such as the American flag and the Auxiliary ensign, should be purchased from commercial sources, trimmed to the appropriate size (none of the flags should be larger than the American flag), and sewn around a metal frame to keep them "flying" at all times. Other flags are complex to make and will take you some time. Flags can be made by printing the design on an iron-on transfer and then transferring the design to fabric. When making flags using this method you will need to make one copy with normal printing and a second copy using reverse printing (for the back side of the flag). Since opposite sides of the flag may not be a mirror image, it is wise to place a flat foam sheet between the two pieces of cloth before sewing them together. When sewing the two halves together, insert a metal rod bent in an L-shape to keep the flag "flying" at all times. Position the wire on the flagpole and attach it using white plastic tape wrapped downward in a spiral manner. These flags can be washed with warm water and laundry detergent and air-dried. Here are some of Coastie's flags:

Coast Guard Ensign



Team Coastie Flag

National Safe Boating Week Flag



NACON Flag

PUBLIC ADDRESS SYSTEM:

The Public address system has become a necessary accessory for various aspects of the Coastie Program. Although Coastie has his own amplification system we have found that the system has some inadequacies. The system is fine in the classroom environment as the basic speakers under Coastie, which point to the floor, can be heard without much difficulty. The problems arise when Coastie is on carpet or in a large room such as a gymnasium, cafeteria, auditorium, outside, or a parade event. One of the first things we did to improve sound projection was to install two 40-watt speakers behind his life rings on each side of his cabin. This improved his amplification a great deal, although in the large open areas it was still not enough.

We looked into the portable PA concept with two wireless microphones. This accommodated Coastie having a microphone clipped to one of his life ring speakers and allowed for the amplification of his voice or music through the PA system. The second microphone is used by the Instructor. This microphone is a neck model that actually raps around the Instructors neck and leaves his hands free. Both the Instructor and Coastie can talk simultaneous through two separate

wireless systems. The 40 watts of amplification is sufficient for any outside event or Parade.

The first unit we used was an Anchor Liberty, model; MPB-4500, Battery and 110 operated \$2,130 with numerous accessories. The fact that the unit is also battery operated allows for much more flexibility. Other makes and models will work equally as well. Remember, the key is portability and the use of multiple microphones through the same speakers.

This is without question a large expenditure to support Coastie although without this unit, or a similar one possibly less expensive; you're limited to the classroom setting. As we have stated, Coastie's own amplification system is marginal at best in open areas.

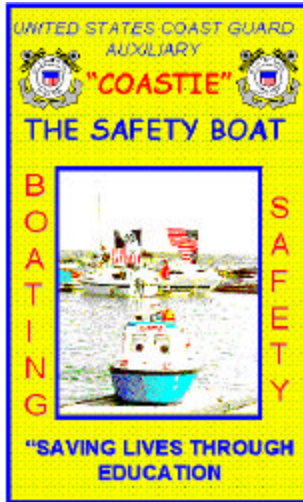
During parades we mount the PA on top of the vehicle pulling Coastie on a flatbed trailer or following him while he marches down the parade route. With the wireless system everyone can hear Coastie speaking and also hear his music. If you're looking for a way to attract attention to an outside booth the PA comes in very handy at projecting voice or music that may bring a crowd to your area.

This system is certainly not mandatory although with two years of experience with Coastie we found the PA to be a very worthwhile investment to his line of accessories.

COASTIE TRADING CARDS: The Coastie Trading Card is a fantastic marketing tool to advertise Boating Safety! The children just love to receive a card when they answer safety questions correctly. Receiving the card gives them a photograph so they will remember Coastie. On the back of the card is the Coastie web site where they can take the Coastie Boating and Water safety Quiz.

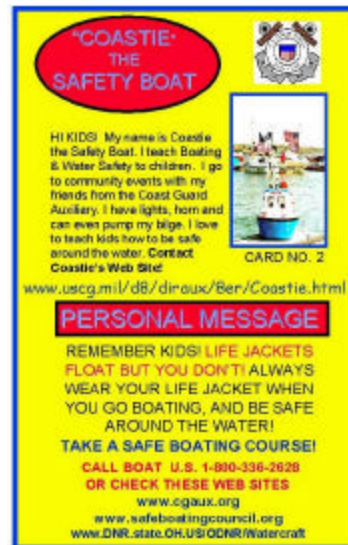
You can modify the card to fit your local needs as far as phone numbers, additional web sites and whom the parents can contact to take a Safe Boating Course.

Below are samples of the front and back of Coastie Trading Card #2. The actual trading cards are 2.5 inches wide by 4.5 inches high. To see full screen version of these trading cards simply click on the image below.



This is the front of the Coastie Trading Card. It is a popular, low cost item that will help children and adults remember Coastie and his message.

This is the back of the trading card. Although this sample is shown in color, the back of the actual trading card is done in black and white. The cost of the trading cards would be much higher if they were in color. In an effort to keep the cost down, we decided to just have the back in black with darker areas indicating a minor change in shade. You can modify the information on the back to list your own local contact number, supporting agency, or other specific information.



TRANSPORTATION: The Transportation issue for Coastie can be somewhat of a problem at times and hopefully our experience with this issue will make it much easier for your Coastie Team.

Coastie is designed to be dismantled in two sections: the upper cabin and the hull. This was necessary so he could easily fit in a station wagon or any low profile vehicle other than a sedan. In Coastie's stern on both sides just under his rear deck there are upper cabin retaining pins. These pins attach the cabin to the hull and are very difficult to disengage. There are also two pins in the front on the port and starboard sides, which are almost in alignment with his eyes. These are especially hard to pull out and re-lock. To access the forward pins you must run your arm up through the rear hatch and over some of his electronics to get to the pins.

Here's a little modification tip that will help. The first thing you need to do is take Coastie apart and drill small holes in the ends of the pins. Insert some strong line

to create a pull lanyard, preferably nylon that is similar to parachute line about a 16th inch in thickness. This easily allows for pulling the pins out, as the ends are small and hard to grasp. In some Coasties they may have a very tight fit until they are cycled in and out a number of times. Of course pushing them in is much easier.

The best type of vehicle to transport Coastie in is one that has the rear or side door height, such as a full-size or mini-van, capable of loading him in his assembled, versus disassemble mode. We have transported ours in a full size van for the last four years without very much difficulty. Keep in mind that Coastie is very heavy, especially the upgraded version as the more we added the heavier he became. Lifting him straight up from the ground to the van is difficult at best. He fits through the back doors and clears the door top very well. This is while he is on his transport cart, which adds another 3 1/2 to 4 inches in height. His transport cart is the safest and best way to carry him, especially up stairs.

He also will fit through the side door of some older mini vans with the seats removed, although the clearance is extremely low and you must be very careful that you don't damage the searchlight, which is the highest point. The style of the searchlight has been changed since Coastie 001 was launched, and there is a good possibility that you will have "no choice" but to disassemble the search light to clear the top of the side door even for the older mini vans.

This leads us to the best way we have found to transport Coastie and all his support equipment such as, cargo box, remote control case, spare battery's, boxes of coloring books, bunk boat trailer, public address system, flags, dolly cart, bag with teaching aids like PFDs and other items that float. Those are just a few of the support items that are needed for Coastie. How do we do all this? We purchased a 6 X 10, completely enclosed cargo trailer with a rear ramp and side door, internal lighting, numerous tie down rings and cargo straps for securing Coastie and all his equipment. The cost for this trailer was \$ 2,818.50. To view a picture of the trailer please click [here](#).

The trailer is extra high so you can stand up. The trailer is single axle and has independent torsion ride suspension, with radial tires for an easy ride as Coastie is primarily electronic and can't be bounced around too much. The trailer has two tongue jacks, flat and wheel, although one is all that is truly necessary. We suggest the wheel for maneuverability. The trailer requires a class two hitch with a two-inch ball, and a standard flat four pin light connector. The best part about having the ramp is no more lifting during loading and unloading.

We felt that almost all our Auxiliary members that had a towable boat would have the capability to hook up and tow this trailer. This way Coastie is always ready to go and does not require lifting in and out of a vehicle or disassembly. Numerous companies make these types of cargo trailers.

Now if funds are a problem then you can do what the Flotilla in Marietta Ohio did -- they built their own. They received some assistance from the local Industrial Technical School, which made the cost very reasonable. Another thought is a used trailer or used U-Haul in fair condition that might just need a little TLC and paint. There is always the possibility of getting a sponsor for purchase or donation from a local trailer dealer, as many companies will willingly contribute to the local Safety City programs. We understand that not all Districts have the luxury of a grant program, which has contributed over \$17,000 to our Coastie program. Although keep in mind "if there is a will there is always a way!"

Insurance, of course! The trailer should be insured along with Coastie and all his support equipment. You will have too much invested not to have insurance, especially liability and collision. Each Auxiliarist who tows the trailer should have personal auto insurance and check with their company to see if the trailer would fall under their policy since it is attached to their vehicle. This is a requirement that will require research on the part of the organization and individuals working with your Coastie.

Remember that when the community observes what you're doing with Coastie, they will want to support your effort of teaching children about boating and water safety. But most of all they see the value of "Saving Lives Through Education".

Need help, you know where to Call or E-mail, Coastie Operations!

bravohotel@juno.com or 602-550-5530

MISCELLANEOUS COASTIE GRAPHICS : There are several other graphic images used in the Coastie program. Samples of some of these graphics are available on the Coastie Web Site. Simply click on Coastie to go to the Web Site.



Coastie's Modification Page

This page contains a listing of various modifications that Coastie Team Members have made on their individual Coastie the Safety Boat. These modifications can be made by other team members as the situation warrants. Please feel free to contact the person who is listed as the point of contact for each modification if you need more information. Whenever you find maintenance or a manufacturing related issue please bring it to the attention of the team.

HOURLY METER INSTALLATION:

Concept. The purpose of the hour meter is to provide an indication of how long Coastie is actually "underway". It also gives an indication of how many hours are being obtained from a battery charge and a running-hour base upon which to schedule maintenance. The installation procedure basically puts the hour meter in parallel with the existing voltmeter.

Material. 12VDC hour meter (Teleflex 569669P or similar. NOTE. The two (2) inch round meter is recommended as it matches the existing volt meter and is easier to install.), two eight (8) inch lengths of #16 or #18 wire, two one-quarter (1/4) inch female quick disconnects, two one-quarter (1/4) inch multistack connectors, and method of making a two and one-eighth (2 1/8) inch hole (electric drill with hole saw or drill and rotary tool).

Procedure.

- (1) Remove the superstructure and place it inverted on a padded surface. (Don't forget to disconnect the power to the CD player and disconnect the 36-pin connector.)
- (2) Manually close the eyelids to provide more hand room.
- (3) Mark the hour meter hole center approximately three (3) inches inboard from

the center of the voltmeter and at the same vertical alignment.

(4) Make the two and one-eighth (2 1/8)-inch diameter hole (or appropriate size hole for your style hour meter). Mount the hour meter in the prepared hole and secure with the mounting brackets provided.

(5) Prepare the two wire leads by crimping a female disconnect on one end and a multistack connector on the other end of each wire.

(6) The hour meter is polarity sensitive; watch your wiring from here on. Place the two quick disconnect terminals on the terminals of the hour meter. You should now have two free wires terminated with multistack connectors.

(7) Remove the "+" wire from the voltmeter; place the "+" wire multistack connector from the hour meter on the voltmeter terminal and replace the original "+" on the multistack connector. Do the same for the "-" wire.

(8) Check your wiring, particularly the polarity of the hour meter leads. (NOTE: Reversed polarity won't damage the hour meter, it just won't run.)

(9) Replace the superstructure.

(10) Turn on Coastie's power; listen for a slight hum or click from the hour meter and make sure the right hand digit is moving.

GUNNEL RUB RAIL:

EMERGENCY "KILL" SWITCH:

Concept. If there is radio interference or other problem that requires the Coastie Program Director to stop Coastie, a push/pull switch can be mounted on the aft rub rail, in series with the positive battery lead, so that as the Program Director reaches out to gain control of Coastie he/she can easily push the switch in to kill all power to Coastie.

Material needed. Heavy duty 30amp push/pull switch, 36 inches of 14 gauge stranded wire, drill with appropriate sized bit, wire cutters, crimping tool, and appropriate sized crimp ring terminals and butt connectors.

Procedure.

(1). Remove Coastie's superstructure.

(2) Cut the wire into two 18 inch lengths and fasten them securely to the push/pull switch.

(3). Drill a hole through the inside portion of the aft gunnel.

(4). Reach inside Coastie's hull and push the push/pull switch through the hole just drilled. Secure the switch in place according to the manufacturer's directions.

(5). Attach one end of the wire from the push/pull switch to the wires leading to the power switch and crimp **SECURELY**.

NOTE 1. The switch must be in the "ON" position while charging the battery.

NOTE 2. Because of radio interference from the drive motors with the command link, **DO NOT** mount the switch further than six (6) inches from the battery; closer is better. **IN NO CASE** mount it on the removable superstructure.

CD PLAYER BRACKET:

Concept. A March 2001 e-mail from Robotronics Inc. stated, " There have been at least three CD players that have broken off of their mounts during transport over the last few months, 014, 012, 011. We want to prevent this from happening on others. To do this Robotronics is going to send two metal brackets to install on each side of the CD player and a metal strap to go to the back screw of the CD player. There will be installation instructions that come with the hardware. We are also going to include rubber boots for your battery posts. We obtained these from the local Troy Built Tiller Store. These will slide over the wires and on to the battery posts to prevent anything from touching the battery posts. Because they slide on to the wire, you have to unbolt each battery wire from the post and slide on the rubber boot. Until you receive these items be very careful especially during transport of the robot. Check the attachment of your CD player to make sure it is secure. If you would like to put a piece of plastic or wood over the battery posts in the mean time you could. I have attached some pictures of the [attachment](#) and [rubber boots](#).

Note about transporting the robot: The CD player breaking the bracket is more likely if your robot gets a lot of bouncing in transport such as in a trailer. It is best to transport the robot in a van or large SUV if possible, but if you must transport it in a trailer, the trailer should have "Independent Torsion Suspension". Attached are the specifications for a Pace American Cargo trailer that is used by Coastie 001. It does not have to be this MFG although it should meet these specifications. A rigid axle trailer will do more damage then good. If you need additional information about trailer specifications [\[click here\]](#). The rule of thumb that we suggest is that if the trailer has shock absorption good enough to transport a computer, this is good enough for a robot. If necessary you could add 4-inch thick foam cushion inside the trailer under the robot.

If you have any questions, you can call me at 1-800 762-6876 or e-mail me at pgeorge@robotronics.com Thank You.

Paul George, Robotronics Service Manager "

TRAILER INFORMATION:

We have found that a 6' x 10' or 6' x 8' enclosed cargo trailer with a rear ramp and side door are best for transporting Coastie. The trailer should be fitted with internal lighting and numerous tie down rings and cargo straps for securing Coastie and all his equipment. An extra high ceiling is helpful as it allows the Coastie handlers to stand erect while loading Coastie and his equipment. The trailer should have a single axle and **independent torsion ride suspension with radial tires**. Two tongue jacks, one flat and one with a wheel, are helpful. Depending on where the trailer will be stored, it may be beneficial to have insulation installed in the trailer to minimize temperature extremes. The rear ramp is helpful when loading Coastie as he can be wheeled right up to his tie downs without being lifted up.



"COASTIE THE SAFETY BOAT"

BOATING AND WATER SAFETY

LESSON PLAN

Introduction:

Good morning everyone, my name is (Instructors **Name**). I'm with the United States Coast Guard Auxiliary or (**other organization**). I'm here with the American Red Cross Safety City Program (**or other organization**) to share with you the importance of Boating and Water Safety. Today I have brought a very special friend with me. He's a little Safety Boat and his name is Coastie. He loves children and he is the smartest little boat in the whole wide world. Today Coastie will help me share with you some of the Boating and Water Safety rules you should all know. Coastie, come on out and meet all these wonderful children from (**school or organization name**). Coastie comes out playing the Coast Guard marching song "SEMPER PARATUS" and introduces himself and tells the children that we are going to learn 6 different rules about Boating and Water Safety.

If the area is not large enough for Coastie to March out, we have Coastie taking a nap. We have the children on the count of three yell, "Wake up Coastie!" Coastie awakens from his nap bating his eyelids and acting surprised that all these children are present. He says, "Hi Kids, my name is, Coastie The Safety Boat!"

Throughout the presentation Coastie and the instructor interact and team-teach Coastie's six safety rules. We maintain the children's attention by getting them involved right away. We have the children sing Happy Birthday to Coastie, as it's always Coastie's birthday. We also have them help Coastie say his ABCs if time permits. Coastie does funny little antics

that keep the kids smiling and laughing at the same time he shares the educational boating and water safety information along with the instructor. But most of all, Coastie maintains their attention so they don't forget what they have learned. The presentation can run from 30-40 minutes depending on the overall Safety City program schedule.

We use the rotating beacon to maintain order and tell the children that when they see the beacon on they must be very quiet and listen to the Instructor. We also tell them to pay close attention and if Coastie falls asleep yell wake up Coastie. This keeps them focused on Coastie and the presentation.

OK KIDS! HERE IS COASTIE'S FIRST RULE.

INSTRUCTOR: COASTIE, WHAT IS YOUR FIRST RULE?

COASTIE:

**DON'T JUST PACK IT
WEAR YOUR LIFE
JACKET!**

INSTRUCTOR:

WHAT DO MOMS, DADS, AND CHILDREN USE TO HELP THEM STAY AFLOAT IN THE WATER?

THAT'S RIGHT! A LIFE JACKET!

QUESTION: Why is it always important to wear your life jacket when you go on a boat?

ANSWER: (In case the boat tips over or you just fall into the water)

Can you imagine what it would be like to try to put on a life jacket in a river or lake? What if you fall out of your boat and cannot reach your life jacket? It is always much safer to wear your life jacket all the time. Life jackets are like seat belts! We always wear our seat belt when we are in the car for safety! When we are boating we should always wear our life jacket.

COASTIE: REMEMBER KIDS! LIFE JACKETS FLOAT BUT YOU DON'T!

Note: The children participate by trying on life jackets and seeing the importance of why they should fit correctly. We have a little competition with three children seeing how fast they can put them on to emphasize that having them on in the first place is the best thing to do. This form of participation can be established locally in any fashion you would choose, as long as the point of wearing PFDs and proper fit is emphasized.

OK! HERE'S COASTIE'S SECOND RULE.

COASTIE: NEVER RIDE ON THE BOW OF A BOAT CAUSE YOU MIGHT FALL IN AND YOU MAY NOT FLOAT!

INSTRUCTOR:

QUESTION: WHY SHOULD YOU NEVER RIDE ON THE BOW OF A BOAT?

Some boats are not designed with seats in the bow and if there are no seats then we should never ride on the bow of a boat. Pontoon boats are especially dangerous because of their design.

If you ride on the bow, and the boat hits a large wave, you might fall in the water and the boat could run over you. It is much safer to ride in the back where the seats are, and always be safe by wearing your life jacket.

Also remember never stand up in a small boat as they can easily be rocked by waves and you might fall out! Remember to stay seated and you'll be much safer because you should,

COASTIE: "Always Wear Your Life Jacket When You Go boating!"

OK! LET'S MOVE ON TO COASTIES THIRD RULE.

INSTRUCTOR:

QUESTION: WHY SHOULDN'T WE JUMP IN AFTER SOMEBODY WHO FALLS IN THE WATER?

COASTIE, WHAT'S THE RULE WE NEED TO REMEMBER?

COASTIE: IF SOMEONE FALLS IN, AND THEY CAN'T SWIM, REACH OR THROW BUT NEVER GO IN!

QUESTION: WHAT COULD YOU DO TO HELP THEM?

When someone falls in the water and they can't swim they might panic. Even though you might be able to swim, it's safer if you stay on the boat or shore and reach or throw something to them. There are many things you could reach or throw them, like a beach ball, life jacket, cooler, boat hook, stick or rope. Anything that might float or they could reach for to hold on to. Don't forget to always call or send for help! Call 911 if you can! If you cannot, have someone else call 911!

NOTE: Children participate in this exercise by reaching a stick or anything that they can reach out with. They also throw floating objects to another student who is the simulated victim. By showing various items that can be thrown or reached out to a victim is educational in itself. They have a great deal of fun doing this and it may save more than one life someday.

OK! HERE'S COASTIE'S FOURTH RULE.

INSTRUCTOR:

COASTIE, WHAT'S THE FOURTH RULE WE NEED TO REMEMBER?

**COASTIE: ALWAYS SWIM WITH
A BUDDY IN A SUPERVISED AREA!**

INSTRUCTOR:

THAT'S RIGHT!

**NEVER SWIM ALONE! IF YOU WERE TO GET INTO TROUBLE AND
NEEDED HELP THERE WOULD BE NO ONE THERE TO HELP YOU.**

Swimming alone is not safe and we should always swim in a supervised area! Does anyone know what that means? Who would be a good supervisor when we go swimming in the lake or off the boat or at the swimming pool?

You are right! Lifeguard, Mom, Dad, any adult, who is present, they would be the right people to supervise you while swimming!

Why should we swim with a buddy? That's correct so you can look after each other.

We emphasize the need to never swim without supervision and when they are swimming to swim with a buddy so if they get in trouble their buddy can call for help.

OK! COASTIE HOW ABOUT THE FIFTH RULE.

INSTRUCTOR:

COASTIE, WHAT'S THE FIFTH RULE WE NEED TO REMEMBER?

**COASTIE: LOOK
BEFORE YOU LEAP!**

INSTRUCTOR:

QUESTION: WHY SHOULDN'T WE LEAP INTO THE LAKE FROM A BOAT OR ROCKY LEDGE TO GO SWIMMING?

In a lake we do not know what is under the surface of the water. There could be rocks or tree stumps, so leaping into a lake off a boat or rocky ledge is not a very safe thing to do. You should carefully enter the water and learn what is there so you do not become injured.

OK! HERE'S OUR FINAL RULE, COASTIE'S SIXTH RULE.

INSTRUCTOR:

QUESTION: THERE IS ONE IMPORTANT THING YOU SHOULD LEARN TO DO BEFORE YOU SPEND TIME AROUND THE WATER TO ALWAYS HAVE FUN AND BE SAFE.

DOES ANYONE KNOW WHAT THAT IS?

**COASTIE: I KNOW! I
KNOW! WE SHOULD
ALL LEARN TO SWIM!**

INSTRUCTOR:

COASTIE, WHY IS THIS RULE SO IMPORTANT?

COASTIE:

**BY LEARNING TO SWIM, YOU WON'T GET INTO
TROUBLE IN DEEP WATER. YOU CAN HAVE
MORE FUN BY LEARNING TO SWIM AND BE
SAFE AROUND THE WATER!**

INSTRUCTOR:

Swimming lessons can be great fun! There are many organizations that teach swimming lessons like community pools and the Red Cross. Remember to tell Mom and Dad that Coastie said you should take swimming lessons before you go boating or swimming at a pool or a lake, make summertime safe and lots of fun!

COASTIE:

**I HAVE TWO MORE
VERY IMPORTANT**

ISSUES I WANT TO COVER!

INSTRUCTOR:

WHAT'S THAT COASTIE?

COASTIE: Pollution is something that we all should be concerned about!

COASTIE: We should never throw any trash, or pump waste, or bilge water overboard! Always take trash to a proper trash receptacle.

INSTRUCTOR:

THE INSTRUCTOR ASKS COASTIE WHAT BILGE WATER IS COASTIE SHOWS THEM BY PUMPING HIS BILGE WATER INTO A PAN.

THE INSTRUCTOR EMPHASIS THE IMPORTANCE OF NOT POLLUTING OR RIVERS, LAKES, AND OCEANS. WHEN COASTIE PUMPS HIS BILGE THE KIDS THINK THIS IS VERY FUNNY, ALTHOUGH IT BRINGS THE MESSAGE TO A VISUAL EMPHASIS.

COASTIE: Let's all team together to keep our waterways clean and beautiful!

Note: Not all Coasties are equipped with bilge pump systems.

COASTIE: Let's all team together to keep our waterways clean and beautiful!

ICE SAFETY

Note: Another very important issue to address is ice safety on lakes, rivers, ponds and streams. This should take place during winter education presentations and can be designed for local use. The key issue is keeping the children off the ice and sharing the **DANGER!**

COASTIE:

Oh! and one more thing! Tell Dad and Mom to take a Safe Boating Course so our waterways will be a safe place for families like yours to have fun! Show them the phone numbers on the back of my trading card I gave you. They can call any of those numbers and sign up for a Safe Boating Course.

(The children receive the **Coastie Trading Card** with a special message to the children.)

COASTIE: REMEMBER MY PERSONAL MESSAGE!

Remember kids! "Always Wear Your Life Jacket" when YOU GO boating and always be safe around the water!

Note: Message may change depending on card No. and update.

(THE CHILDREN ALSO RECEIVE A COLORING BOOK FROM THE USCGA OR CORPS. OF ENGINEERS ON BOATING AND WATER SAFETY)

INSTRUCTOR:

Let's review what we learned today!

Coastie, would you go over the rules we learned today! And kids, would you please help Coastie!

Coastie: Ok kids. on three, LET'S say the rules

together! 1 2 3!

- 1. (DON'T JUST PACK IT! WEAR YOUR LIFE JACKET!)**
- 2. (NEVER RIDE ON THE BOW OF A BOAT CAUSE YOU MIGHT FALL IN AND YOU MAY NOT FLOAT)**
- 3. (IF SOMEONE FALLS IN, AND THEY CAN'T SWIM, REACH OR THROW BUT NEVER GO IN)**
- 4. (ALWAYS SWIM WITH A BUDDY IN A SUPERVISED AREA)**
- 5. (LOOK BEFORE YOU LEAP)**
- 6. (LEARN TO SWIM)**

Coastie:

DON'T FORGET! TELL MOM AND DAD TO TAKE A SAFE BOATING COURSE!

FROM THE INSTRUCTOR AND COASTIE:

INSTRUCTOR:

Thank you for being such a wonderful class. I hope that you enjoy the rest of your day and remember to be safe around boats and the water.

Coastie:

It doesn't matter if you're on a boat or at a lake or swimming pool, just remember that,

COASTIE SAYS.

**"SAFETY FIRST IS THE RULE,
FOLLOW IT AND YOU'LL BE COOL."**

COASTIE:

**PLEASE VISIT MY WEB SITE. THE
ADDRESS IS ON YOUR TRADING
CARD. DON'T FORGET TO TAKE THE
COASTIE BOATING AND WATER
SAFETY QUIZ. IT'S LOTS OF FUN!**

We finish the program with the **Coastie song**, which reinforces the safety rules with

a catchy tune that everyone loves.

Coastie:

**WOULD YOU KIDS LIKE TO HEAR
THE COASTIE SONG? OK, LISTEN
FOR SOME OF THE RULES WE
LEARNED TODAY!**

(USE DURING WINTER MONTHS)

**REMEMBER WHEN SUMMER COMES
BACK, "SAFETY FIRST IS THE RULE,
FOLLOW IT AND YOU'LL BE COOL!"**

THANK YOU!

BYE! BYE!

Note: This presentation is a guideline for your use. This lesson plan can be modified to meet your local needs although for national program uniformity we would like to see you remain with this plan. The plan does not need to

be presented word for word and once you have presented a few times it becomes very easy.

